

SPENT

DOVE BRADSHAW

The Glass House, Amstel Park, Amsterdam, 2016



Negative Ions II [salt, separatory, funnel, water], 1996 and *Spent Bullets* [3D printed .38 caliber bullets], 2015-16



Spent Bullet [Lemon Gold], 2015/2016, ABS resin, 18 carat lemon gold, 8 1/2 x 23 1/4 x 16 inches



Negative Ions II, 1996, salt, separatory, funnel, water, size: variable
Medium, 1992/2009 and *Spent Bullet [Double Bronze]*, 2015/2016



Spent Bullet [Blue Car Paint], 2015/2016, ABS resin, car paint,
10 1/2 x 26 1/2 x 16 1/4 inches



BRADSHAW [LTD Box Book], 2003, mixed media with 6 works to house second monograph
Text: Thomas McEvilley, with reprinting of John Cage and Thomas McEvilley a Conversation, 1992



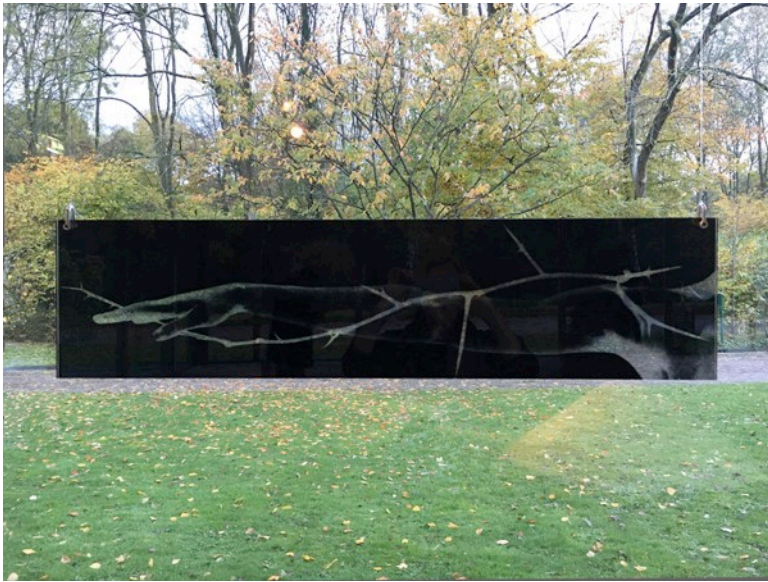
Home, 2008/2016, honey Locust thorns, h:62 inches
Waterstone, 1996, limestone, 1000 ml funnel, water



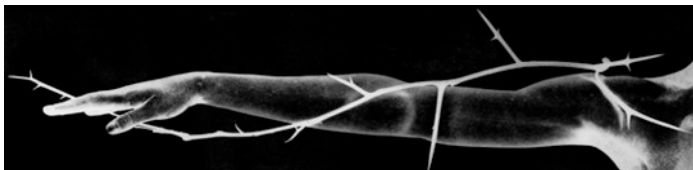
$2\sqrt{0}$, 1971/1998, Edition of 10, [clock/level]
The Mattress Factory, box & first monograph



Nothing [II Series 2], 1969/2004, 18 carat gold cast of a goose egg shell



Medium, 1992/2011, film on Plexiglas, 7 x 28 inches





Spent Bullet [Double Bronze], 2015/2016, bronze plate over ABS resin,
26 ¼ x 26 ¾ x 13 ¼ inches





*Negative Ions II, Nothing [II Series 2], in vitrine,
Medium, Spent Bullet [Double Bronze]*



*Spent Bullet [Dum Dum II], 2015/2016, ABS resin, rubber,
8 1/4 x 21 1/4 x 8 inches*



Spent Bullet [Aluminum III], 2015/2016, ABS resin, aluminum paint, 26 1/4 x 26 3/4 x 13 1/4 inches



Waterstone, Negative Ions, Spent Bullets



Negative Ions, Home, Waterstone

SPACETIME, DVD, 23' 22", 2011
Scored to John Cage's *Ryoanji*, 1983-1985
Screened continuously in second room
Sound projected in main gallery

